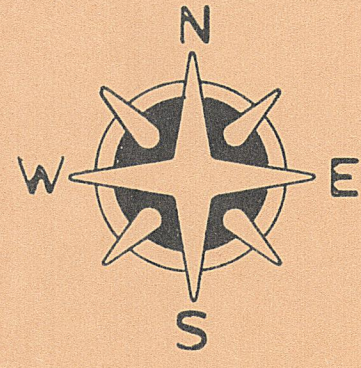


COUNTY ENGINEER
KEITH G. EARLEY P.E.
COUNTY COMMISSIONERS
H. MUHLENKAMP
J. LAFFIN
R. PUTHOFF



MARION TOWNSHIP

MERCER COUNTY, OHIO
TOWN 12 & 13 NORTH, RANGE 3 & 4 EAST, TOWN 7 & 8 SOUTH

—LEGEND—

STATE ROADS
COUNTY ROADS
TOWNSHIP ROADS

TRUSTEES

R. REICHERT R. UNRAST
L. HOMAN
J. BRUNS

CLERKS

K. WUEBKER

ENTIRE TOWNSHIP ZONED A-1, AND R-1

TRACED BY LLK 1979
REVISED LLK 1981
REVISED JFE JAN 1983
REVISED KEM MAR 1984
REVISED DVH JUNE 1987

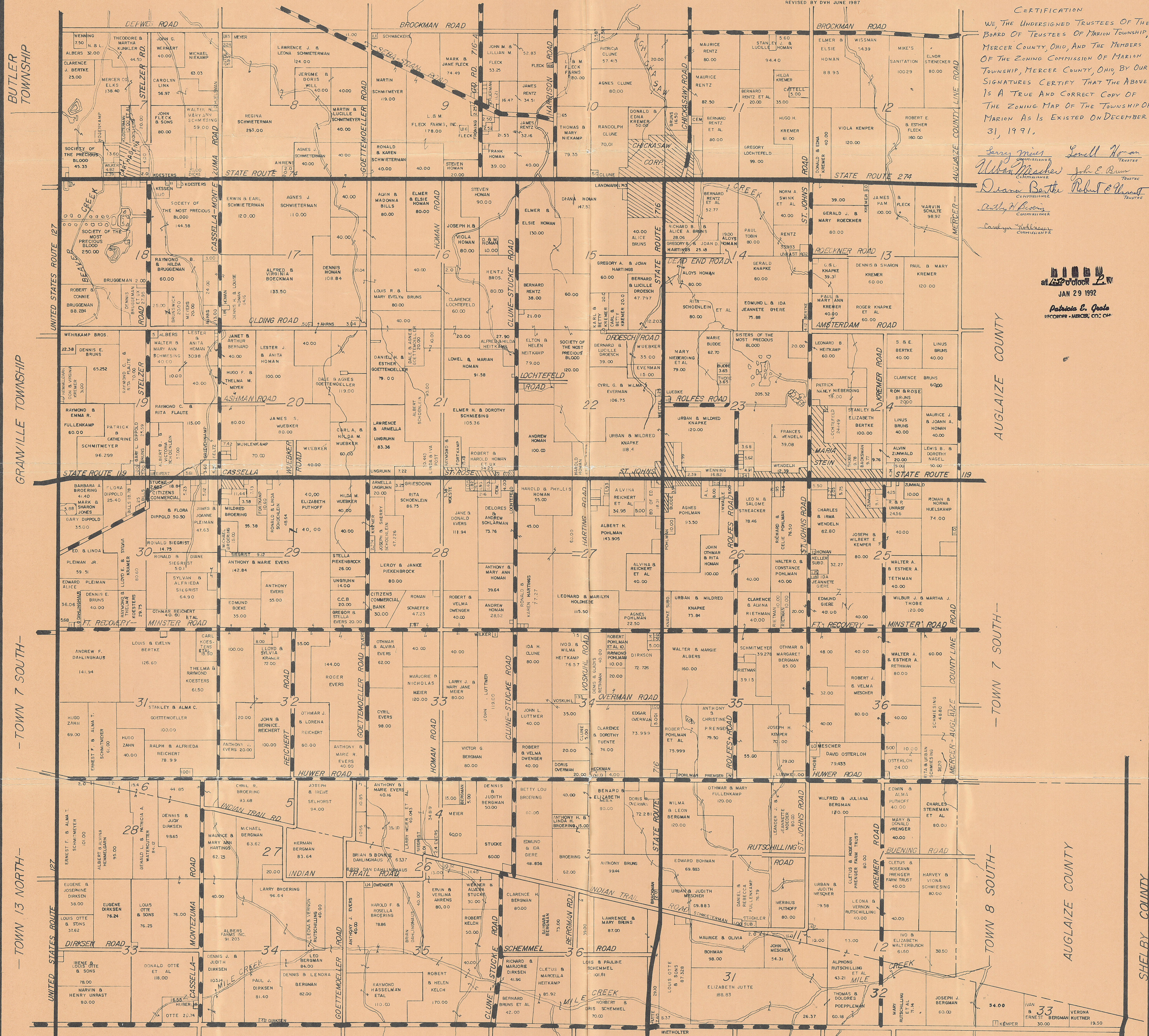
CERTIFICATION

WE, THE UNDERSIGNED TRUSTEES OF THE BOARD OF TRUSTEES OF MARION TOWNSHIP, MERCER COUNTY, OHIO, AND THE MEMBERS OF THE ZONING COMMISSION OF MARION TOWNSHIP, MERCER COUNTY, OHIO, BY OUR SIGNATURES CERTIFY THAT THE ABOVE IS A TRUE AND CORRECT COPY OF THE ZONING MAP OF THE TOWNSHIP OF MARION AS IS EXISTED ON DECEMBER 31, 1991.

Sandy Meier Commissioner
Urbain Mascher Commissioner
Diana Berthel Commissioner
Robert E. Unrast Trustee
John E. Bruns Trustee
Robert E. Unrast Trustee
Robert E. Unrast Trustee
Robert E. Unrast Trustee
Robert E. Unrast Trustee

at 2:00 P.M.
JAN 29 1992

Patricia S. Gools
RECORDER - MERCER CO., OH.



BUTLER TOWNSHIP

GRANVILLE TOWNSHIP

TOWN 7 SOUTH

TOWN 13 NORTH

AUGLAIZE COUNTY

TOWN 7 SOUTH

TOWN 8 SOUTH

AUGLAIZE COUNTY

SHELBY COUNTY

DARKE COUNTY - TOWN 13 NORTH, RANGE 3 EAST -

- TOWN 12 NORTH, RANGE 4 EAST - DARKE COUNTY