

COUNTY ENGINEER
 KEITH G. EARLEY R.E.
 COUNTY COMMISSIONERS
 H. MURLENKAMP
 J. LAFFIN
 R. PUTHOFF

HOPEWELL TOWNSHIP

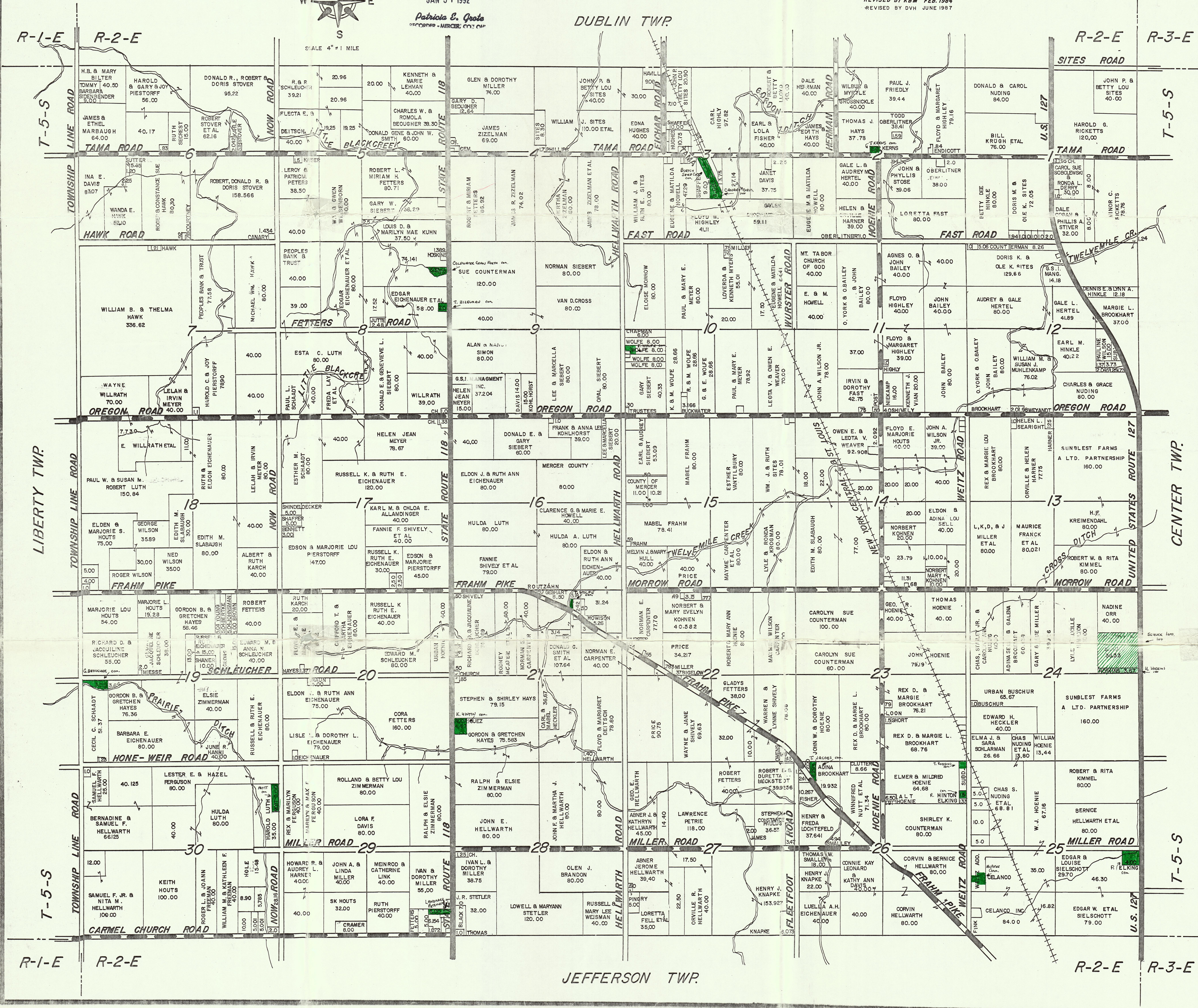
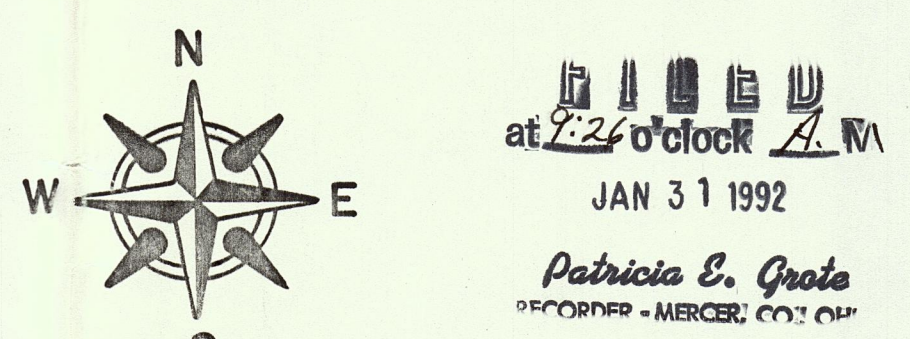
MERCER COUNTY, OHIO

TOWN 5 SOUTH, RANGE 2 EAST

LEGEND
 STATE ROUTE
 COUNTY ROAD
 TWP. ROAD

TRUSTEES
 P. MEYER
 G. SIEBERT
 T. SIDENBENDER
 CLERK
 E. EICHENAUER

TRACED BY V.C.E. SEPT. 1979
 REVISED BY LLK JAN. 1981
 REVISED BY J.E.E. JAN. 1983
 REVISED BY KBM FEB. 1984
 REVISED BY DVH JUNE 1987



CERTIFICATION

We, the undersigned Trustees of the Board of Trustees of Hopewell Township, Mercer County, Ohio, and the members of the Zoning Commission of Hopewell Township, Mercer County, Ohio, by our signatures certify that the above is a true and correct copy of the Zoning Map of the Township of Hopewell as it existed on December 31, 1991.

Nita Hellwirth
commissioner

Eldon Eschenauer
trustee

Howard Robbins
commissioner

Paul E. Meyer
trustee

Jeff Casper
commissioner

Tom Lidenbender
trustee

Rita K. Kimmel
commissioner

Alan E. Miller
commissioner